

# 香港知識產權公報

Hong Kong Intellectual Property Journal

2016年8月19日  
19 August 2016



## 目錄 Contents

根據註冊外觀設計條例第25條註冊的外觀設計  
Designs Registered under section 25 of the Registered  
Designs Ordinance

[按註冊編號排列](#)  
[Arranged by Registration Number](#)

根據註冊外觀設計條例(第522章)公布的其他公告  
Other Notices Published under the Registered Designs  
Ordinance (Cap. 522)

[根據註冊外觀設計條例第28條，註冊外觀設計因未繳續期費而停止有效](#)  
[Registered Designs Ceased through Non-payment of Renewal Fees under](#)  
[section 28 of the Registered Designs Ordinance](#)

[根據註冊外觀設計規則第31條刪除的註冊外觀設計](#)  
[Registered Designs Removed under section 31 of the Registered](#)  
[Designs Rules](#)

以下事項沒有記錄  
No Records for the Following Matters

[根據註冊外觀設計條例第30條放棄的外觀設計的註冊](#)  
[Surrender of Registration of Design under section 30 of the](#)  
[Registered Designs Ordinance](#)

[根據註冊外觀設計規則第37條，向處長作出轉介](#)  
[Reference to Registrar under section 37 of the Registered Designs](#)  
[Rules](#)

[根據註冊外觀設計條例第45條，撤銷註冊](#)  
[Revocation of Registration under section 45 of the Registered](#)

## Designs Ordinance

根據註冊外觀設計規則第46條，向法院作出轉介

Reference to Court under section 46 of the Registered Designs Rules

根據註冊外觀設計規則第63條對不符合規定之處作出糾正

Rectification of Irregularities under section 63 of the Registered Designs Rules

根據註冊外觀設計條例第66條，糾正註冊紀錄冊

Rectification of Register under section 66 of the Registered Designs Ordinance

根據註冊外觀設計條例第 67 條，更正註冊紀錄冊內的錯誤

Correction of Errors in Register under section 67 of the Registered Designs Ordinance

根據註冊外觀設計條例第67及76條，更正註冊紀錄冊內及已提交文件中的錯誤

Correction of Errors in Register and in Filed Documents under sections 67 and 76 of the Registered Designs Ordinance

根據註冊外觀設計條例第76條，更正已提交文件中的錯誤

Correction of Errors in Filed Documents under section 76 of the Registered Designs Ordinance

勘誤

Corrigendum

## 註冊外觀設計公告註釋

### Notes on advertisements of registration of designs

方括號表示下列資料：

Square brackets indicate the following data：

[11] 註冊編號 Registration number / 聯合王國註冊編號 United Kingdom registration number

[15] 註冊日期 Registration date / 當作註冊日期 Deemed registration date / 聯合王國註冊日期 United Kingdom registration date

[17] 註冊有效期屆滿日期 Expiry date of the period of registration

[22] 提交日期 Filing date / 當作提交日期 Deemed filing date / 聯合王國提交日期 United Kingdom filing date

[30] 聲稱享有的優先權 (提交日期 / 巴黎公約國或世界貿易組織成員 / 申請編號) Priority claimed (filing date / Paris Convention country or WTO member / application number)

[51] 國際外觀設計分類號 (洛迦諾分類號) International Classification of designs (Locarno Classification)

[54] 物品 Article

[55] 外觀設計的表述 Representation of the design

[62] 分開前的申請編號及提交日期 Application number before division and filing date

[66] 過往註冊的聯繫外觀設計註冊編號 / 日期 Registration No. / Date of Previous Registration for Association

[72] 設計人 Designer

[73] 擁有人姓名和地址 Name and address of the owner

[74] 代理人 Agent / 送達地址 Address for service



香港特別行政區政府知識產權署外觀設計註冊處  
The Government of the Hong Kong Special Administrative Region  
Designs Registry, Intellectual Property Department

## 根據註冊外觀設計條例第25條註冊的外觀設計

### Designs registered under section 25 of the Registered Designs Ordinance

按註冊編號排列

Arranged by Registration Number

- [11] 1600009.7
- [15] 06-01-2016
- [30] 06-07-2015 / US / 29/532,363
- [51] C1. 14 - 01
- [54] 耳機設備  
Earphone device
- [73] 新視聲有限公司  
New Audio LLC  
276 Fifth Avenue, Suite 902,  
New York, NY 10001,  
UNITED STATES
- [74] SBZL Intellectual Property Service Limited  
RM 1005 (B), 10/F, H  
O KING COMMERCIAL CENTRE 2-16,  
FA YUEN STREET, MONGKOK, KOWLOON, HONG KONG



- 
- [11] 1600300.4
  - [15] 26-02-2016
  - [30] 28-08-2015 / JP / 018921 of 2015
  - [51] C1. 23 - 02
  - [54] 坐便器  
Closestool

[73] 驪住株式會社

KABUSHIKIGAISHA RIKUSHIRU (LIXIL CORPORATION)

日本東京

都江東區大島

二丁目1 番1 號

[74] 中國專利代理(香港)有限公司

香港灣仔

港灣道23號

鷹君中心22字樓



---

[11] 1600432.3

[15] 14-03-2016

[30] 15-10-2015 / US / 29/542,540

[51] C1. 14 - 01

[54] 無線充電藍牙揚聲器連鬧鐘

Wireless charging bluetooth speaker with alarm clock

[73] SDI Technologies Inc.

1299 Main Street,

Rahway, N.J. 07065,

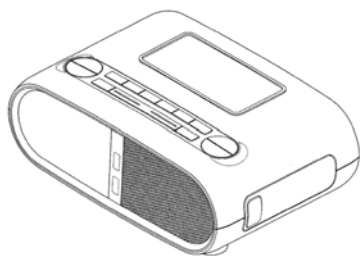
United States

[74] Comtrad Trading Limited (Attention to: Prudence Lo)

504-6 Harbour Centre Tower 2

8 Hok Cheung Street, Hung Hom

Kowloon, Hong Kong



[11] 1600490.5M001

[15] 21-03-2016

[51] C1. 11 - 01

[54] 珠寶元素

Jewellery element

[73] De Beers UK Limited

17 Charterhouse Street,

London EC1N 6RA,

UNITED KINGDOM

[74] Deacons

5th Floor,

Alexandra House, Central,

HONG KONG



---

[11] 1600490.5M002

[15] 21-03-2016

[51] C1. 11 - 01

[54] 珠寶元素

Jewellery element

[73] De Beers UK Limited

17 Charterhouse Street,

London EC1N 6RA,

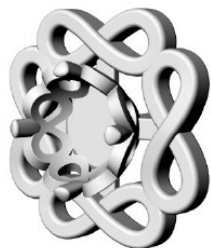
UNITED KINGDOM

[74] Deacons

5th Floor,

Alexandra House, Central,

HONG KONG



---

[11] 1600497.0M001

[15] 21-03-2016

[51] C1. 21 - 01

[54] 積木

Building block

[73] 譚珏寶

TAM, KOK PO PEARL

Room 213, 2/F, Wing On Plaza, 62,

Mody Road, Tsim Sha Tsui East,

Kowloon, HONG KONG

[74] CHINAHONGKONG PATENT LIMITED

3012, 30/F, Office Tower,

Convention Plaza, 1 Harbour Road,

HONG KONG



---

[11] 1600497.0M002

[15] 21-03-2016

[51] C1. 21 - 01

[54] 積木

Building block

[73] 譚珏寶

TAM, KOK PO PEARL

Room 213, 2/F, Wing On Plaza, 62,

Mody Road, Tsim Sha Tsui East,

Kowloon, HONG KONG



[74] CHINAHONGKONG PATENT LIMITED  
3012, 30/F, Office Tower,  
Convention Plaza, 1 Harbour Road,  
HONG KONG



---

[11] 1600497.0M003

[15] 21-03-2016

[51] C1. 21 - 01

[54] 積木

Building block

[73] 譚珽寶

TAM, KOK PO PEARL

Room 213, 2/F, Wing On Plaza, 62,  
Mody Road, Tsim Sha Tsui East,  
Kowloon, HONG KONG

[74] CHINAHONGKONG PATENT LIMITED

3012, 30/F, Office Tower,  
Convention Plaza, 1 Harbour Road,  
HONG KONG



---

[11] 1600497.0M004

[15] 21-03-2016

[51] C1. 21 - 01

[54] 積木

Building block

[73] 譚珽寶

TAM, KOK PO PEARL

Room 213, 2/F, Wing On Plaza, 62,  
Mody Road, Tsim Sha Tsui East,  
Kowloon, HONG KONG

[74] CHINAHONGKONG PATENT LIMITED

3012, 30/F, Office Tower,  
Convention Plaza, 1 Harbour Road,  
HONG KONG



---

[11] 1600497.0M005

[15] 21-03-2016

[51] C1. 21 - 01

[54] 積木

Building block

[73] 譚珽寶

TAM, KOK PO PEARL

Room 213, 2/F, Wing On Plaza, 62,  
Mody Road, Tsim Sha Tsui East,  
Kowloon, HONG KONG

[74] CHINAHONGKONG PATENT LIMITED

3012, 30/F, Office Tower,  
Convention Plaza, 1 Harbour Road,  
HONG KONG



[11] 1600497.0M006

[15] 21-03-2016

[51] C1. 21 - 01

[54] 積木

Building block

[73] 譚珏寶

TAM, KOK PO PEARL

Room 213, 2/F, Wing On Plaza, 62,  
Mody Road, Tsim Sha Tsui East,  
Kowloon, HONG KONG

[74] CHINAHONGKONG PATENT LIMITED

3012, 30/F, Office Tower,  
Convention Plaza, 1 Harbour Road,  
HONG KONG



---

[11] 1600497.0M007

[15] 21-03-2016

[51] C1. 21 - 01

[54] 積木

Building block

[73] 譚珏寶

TAM, KOK PO PEARL

Room 213, 2/F, Wing On Plaza, 62,  
Mody Road, Tsim Sha Tsui East,  
Kowloon, HONG KONG

[74] CHINAHONGKONG PATENT LIMITED

3012, 30/F, Office Tower,  
Convention Plaza, 1 Harbour Road,  
HONG KONG



---

[11] 1600497.0M008

[15] 21-03-2016

[51] C1. 21 - 01

[54] 積木

Building block

[73] 譚珏寶

TAM, KOK PO PEARL

Room 213, 2/F, Wing On Plaza, 62,

Mody Road, Tsim Sha Tsui East,

Kowloon, HONG KONG

[74] CHINAHONGKONG PATENT LIMITED

3012, 30/F, Office Tower,

Convention Plaza, 1 Harbour Road,

HONG KONG



---

[11] 1600497.0M009

[15] 21-03-2016

[51] C1. 21 - 01

[54] 積木

Building block

[73] 譚珏寶

TAM, KOK PO PEARL

Room 213, 2/F, Wing On Plaza, 62,

Mody Road, Tsim Sha Tsui East,

Kowloon, HONG KONG

- [74] CHINAHONGKONG PATENT LIMITED  
3012, 30/F, Office Tower,  
Convention Plaza, 1 Harbour Road,  
HONG KONG



---

[11] 1600497.OM010

[15] 21-03-2016

[51] C1. 21 - 01

[54] 積木

Building block

[73] 譚珺寶

TAM, KOK PO PEARL

Room 213, 2/F, Wing On Plaza, 62,  
Mody Road, Tsim Sha Tsui East,  
Kowloon, HONG KONG

- [74] CHINAHONGKONG PATENT LIMITED  
3012, 30/F, Office Tower,  
Convention Plaza, 1 Harbour Road,  
HONG KONG



---

[11] 1600497.OM011

[15] 21-03-2016

[51] C1. 21 - 01

[54] 積木

Building block

[73] 譚珽寶

TAM, KOK PO PEARL

Room 213, 2/F, Wing On Plaza, 62,  
Mody Road, Tsim Sha Tsui East,  
Kowloon, HONG KONG

[74] CHINAHONGKONG PATENT LIMITED

3012, 30/F, Office Tower,  
Convention Plaza, 1 Harbour Road,  
HONG KONG



---

[11] 1600497.0M012

[15] 21-03-2016

[51] C1. 21 - 01

[54] 積木

Building block

[73] 譚珽寶

TAM, KOK PO PEARL

Room 213, 2/F, Wing On Plaza, 62,  
Mody Road, Tsim Sha Tsui East,  
Kowloon, HONG KONG

[74] CHINAHONGKONG PATENT LIMITED

3012, 30/F, Office Tower,  
Convention Plaza, 1 Harbour Road,  
HONG KONG



[11] 1600545.4M001

[15] 29-03-2016

[51] C1. 7 - 02

[54] 燉鍋

Casserole

[73] Kinox Trading Limited

20/F, Kinox Centre,

9 Hung To Road, Kwun Tong,

Kowloon, HONG KONG

[74] FEDERATION OF HONG KONG INDUSTRIES

31/F, BILLION PLAZA,

8 CHEUNG YUE STREET, CHEUNG SHA WAN,

KOWLOON, HONG KONG



---

[11] 1600545.4M002

[15] 29-03-2016

[51] C1. 7 - 02

[54] 深煮鍋

Saucepan

[73] Kinox Trading Limited

20/F, Kinox Centre,

9 Hung To Road, Kwun Tong,

Kowloon, HONG KONG

[74] FEDERATION OF HONG KONG INDUSTRIES

31/F, BILLION PLAZA,

8 CHEUNG YUE STREET, CHEUNG SHA WAN,

KOWLOON, HONG KONG



---

[11] 1600545.4M003

[15] 29-03-2016

[51] C1. 7 - 02

[54] 煎鍋

Frypan

[73] Kinox Trading Limited

20/F, Kinox Centre,

9 Hung To Road, Kwun Tong,

Kowloon, HONG KONG

[74] FEDERATION OF HONG KONG INDUSTRIES

31/F, BILLION PLAZA,

8 CHEUNG YUE STREET, CHEUNG SHA WAN,

KOWLOON, HONG KONG



---

[11] 1600546.6

[15] 29-03-2016

[51] C1. 26 - 05

[54] 吊燈

Hanging lamp

[73] 黃志達設計顧問(深圳)有限公司

中國內地深圳市

南山區僑香路香年廣場

南區主樓A座11層1102A

[74] 天標知識產權代理有限公司

香港九龍

尖沙咀加連威老道14號

加連威大廈4樓A座





---

[11] 1600548.0

[15] 29-03-2016

[51] C1. 9 - 09

[54] 垃圾桶

Rubbish bin

[73] 塑舜實業有限公司

台灣

台南市

歸仁區沙崙里二甲2號

[74] 中港知識產權有限公司

香港

港灣道1號

會展廣場辦公大樓30樓3011室



---

[11] 1600566.8M001

[15] 30-03-2016

[30] 30-09-2015 / US / 29/541,086

[51] C1. 10 - 05

[54] 活動監測設備

Activity monitoring device

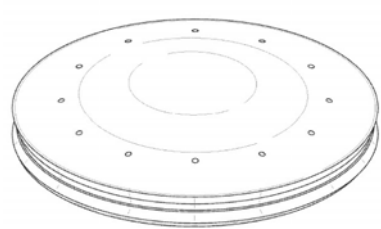
[73] MISFIT, INC.

839 MITTEN ROAD, SUITE 100,

BURLINGAME, CA 94010,

UNITED STATES

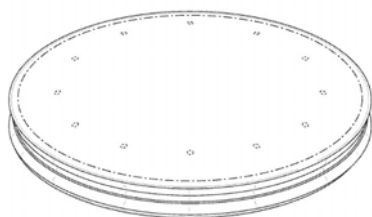
- [74] CLT Patent & Trademark (H.K.) Ltd.  
Unit 09, 34/F., Office Tower,  
Convention Plaza, No. 1 Harbour Road,  
Wanchai, HONG KONG



- 
- [11] 1600566.8M002  
[15] 30-03-2016  
[30] 30-09-2015 / US / 29/541,086  
[51] C1. 10 - 05  
[54] 活動監測設備

Activity monitoring device

- [73] MISFIT, INC.  
839 MITTEN ROAD, SUITE 100,  
BURLINGAME, CA 94010,  
UNITED STATES  
[74] CLT Patent & Trademark (H.K.) Ltd.  
Unit 09, 34/F., Office Tower,  
Convention Plaza, No. 1 Harbour Road,  
Wanchai, HONG KONG



- 
- [11] 1600566.8M003  
[15] 30-03-2016  
[30] 30-09-2015 / US / 29/541,086  
[51] C1. 10 - 05

[54] 活動監測設備

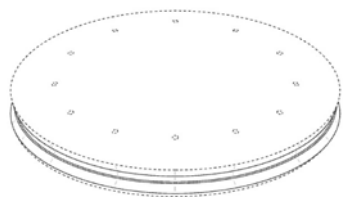
Activity monitoring device

[73] MISFIT, INC.

839 MITTEN ROAD, SUITE 100,  
BURLINGAME, CA 94010,  
UNITED STATES

[74] CLT Patent & Trademark (H.K.) Ltd.

Unit 09, 34/F., Office Tower,  
Convention Plaza, No. 1 Harbour Road,  
Wanchai, HONG KONG



---

[11] 1600566.8M004

[15] 30-03-2016

[30] 30-09-2015 / US / 29/541,086

[51] C1. 10 - 05

[54] 活動監測設備

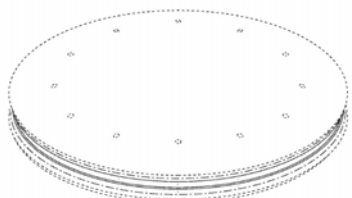
Activity monitoring device

[73] MISFIT, INC.

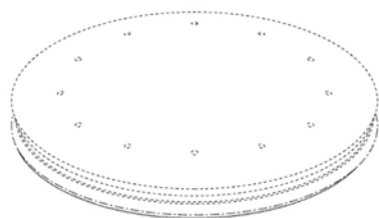
839 MITTEN ROAD, SUITE 100,  
BURLINGAME, CA 94010,  
UNITED STATES

[74] CLT Patent & Trademark (H.K.) Ltd.

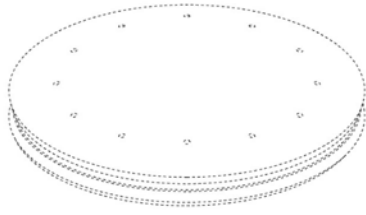
Unit 09, 34/F., Office Tower,  
Convention Plaza, No. 1 Harbour Road,  
Wanchai, HONG KONG



- [11] 1600566.8M005  
[15] 30-03-2016  
[30] 30-09-2015 / US / 29/541,086  
[51] C1. 10 - 05  
[54] 活動監測設備  
Activity monitoring device  
[73] MISFIT, INC.  
839 MITTEN ROAD, SUITE 100,  
BURLINGAME, CA 94010,  
UNITED STATES  
[74] CLT Patent & Trademark (H.K.) Ltd.  
Unit 09, 34/F., Office Tower,  
Convention Plaza, No. 1 Harbour Road,  
Wanchai, HONG KONG



- 
- [11] 1600566.8M006  
[15] 30-03-2016  
[30] 30-09-2015 / US / 29/541,086  
[51] C1. 10 - 05  
[54] 活動監測設備  
Activity monitoring device  
[73] MISFIT, INC.  
839 MITTEN ROAD, SUITE 100,  
BURLINGAME, CA 94010,  
UNITED STATES  
[74] CLT Patent & Trademark (H.K.) Ltd.  
Unit 09, 34/F., Office Tower,  
Convention Plaza, No. 1 Harbour Road,  
Wanchai, HONG KONG



---

[11] 1600567.0

[15] 30-03-2016

[30] 30-09-2015 / FR / 2015/4730

[51] C1. 16 - 06

[54] 太陽眼鏡

Sunglasses

[73] CHLOE

5/ 7 avenue Percier - 75008 Paris,

FRANCE

[74] CHAN, TANG & KWOK

Rooms 2503-04, 25/F.,

Shanghai Industrial Investment Building,

48-62 Hennessy Road, Wanchai, HONG KONG



---

[11] 1600568.2

[15] 30-03-2016

[30] 30-09-2015 / FR / 2015/4729

[51] C1. 3 - 01

[54] 手袋

Handbag

[73] CHLOE

5/ 7 avenue Percier - 75008 Paris, FRANCE

[74] CHAN, TANG & KWOK

Rooms 2503-04, 25/F.,

Shanghai Industrial Investment Building,

48-62 Hennessy Road, Wanchai, HONG KONG



---

[11] 1600569.4

[15] 30-03-2016

[30] 30-09-2015 / FR / 2015/4729

[51] C1. 3 - 01

[54] 手袋

Handbag

[73] CHLOE

5/ 7 avenue Percier - 75008 Paris,  
FRANCE

[74] CHAN, TANG & KWOK

Rooms 2503-04, 25/F.,  
Shanghai Industrial Investment Building,  
48-62 Hennessy Road, Wanchai, HONG KONG



---

[11] 1600570.6

[15] 30-03-2016

[30] 30-09-2015 / FR / 2015/4729

[51] C1. 3 - 01

[54] 手袋

Handbag

[73] CHLOE

5/ 7 avenue Percier – 75008 Paris,  
FRANCE

- [74] CHAN, TANG & KWOK  
Rooms 2503-04, 25/F.,  
Shanghai Industrial Investment Building,  
48-62 Hennessy Road, Wanchai, HONG KONG



- 
- [11] 1600574.4M001  
[15] 31-03-2016  
[30] 01-10-2015 / LI / 2015-632  
[51] C1. 10 - 02  
[54] 手錶  
Wristwatch  
[73] SWAROVSKI AKTIENGESELLSCHAFT  
Dröschistrasse 15,  
9495 Triesen,  
LIECHTENSTEIN  
[74] Baker & McKenzie  
14F Hutchison House,  
10 Harcourt Road,  
HONG KONG



- [11] 1600574.4M002  
[15] 31-03-2016  
[30] 01-10-2015 / LI / 2015-632  
[51] C1. 10 - 02  
[54] 手錶  
Wristwatch  
[73] SWAROVSKI AKTIENGESELLSCHAFT  
Dröschistrasse 15,  
9495 Triesen,  
LIECHTENSTEIN  
[74] Baker & McKenzie  
14F Hutchison House,  
10 Harcourt Road,  
HONG KONG



- 
- [11] 1600574.4M003  
[15] 31-03-2016  
[30] 01-10-2015 / LI / 2015-632  
[51] C1. 10 - 02  
[54] 手錶  
Wristwatch  
[73] SWAROVSKI AKTIENGESELLSCHAFT  
Dröschistrasse 15,  
9495 Triesen,  
LIECHTENSTEIN  
[74] Baker & McKenzie  
14F Hutchison House,  
10 Harcourt Road,  
HONG KONG





---

[11] 1600575.7

[15] 31-03-2016

[30] 01-10-2015 / AZ, JP, MC, KR, SG, CH, TR, UA, EM, MA / DM/087  
807

[51] C1. 16 - 06

[54] 太陽眼鏡

Sunglasses

[73] CHRISTIAN DIOR COUTURE

30 avenue Montaigne,

75008 PARIS,

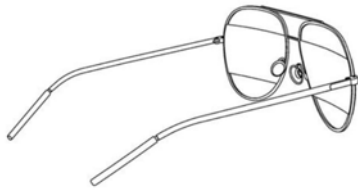
FRANCE

[74] Wilkinson & Grist

6th Floor, Prince's Building,

Chater Road,

HONG KONG



---

[11] 1600576.9

[15] 31-03-2016

[30] 01-10-2015 / AZ, JP, MC, KR, SG, CH, TR, UA, EM, MA / DM/087  
810

[51] C1. 3 - 01

[54] 袋

Bag

[73] CHRISTIAN DIOR COUTURE

30 avenue Montaigne,

75008 PARIS,

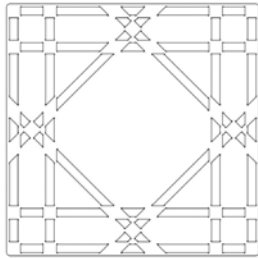
FRANCE

[74] Wilkinson & Grist

6th Floor, Prince's Building,

Chater Road,

HONG KONG



---

[11] 1600577.1

[15] 31-03-2016

[30] 02-10-2015 / AZ, JP, MC, KR, SG, CH, TR, UA, EM, MA / DM/087  
697

[51] C1. 3 - 01

[54] 手袋

Handbag

[73] CHRISTIAN DIOR COUTURE

30 avenue Montaigne,

75008 PARIS,

FRANCE

[74] Wilkinson & Grist

6th Floor, Prince's Building,

Chater Road,

HONG KONG



[11] 1600579.5M001

[15] 31-03-2016

[30] 01-10-2015 / BZ, MA, AL, AM, AZ, BA, MK, GE, KG, LI, MN, ME,  
OM, KR, MD, CH, TN, TR, EM / DM/087 875

[51] C1. 10 - 02

[54] 手錶

Wristwatch

[73] SWATCH AG (SWATCH SA) (SWATCH LTD.)

Jakob-Stä mpfli-Strasse 94,

CH-2502 Biel/Bienne,

SWITZERLAND

[74] E11a Cheong (Hong Kong) Limited

5001 Hopewell Centre,

183 Queen's Road East,

HONG KONG



---

[11] 1600579.5M002

[15] 31-03-2016

[30] 01-10-2015 / BZ, MA, AL, AM, AZ, BA, MK, GE, KG, LI, MN, ME,  
OM, KR, MD, CH, TN, TR, EM / DM/087 875

[51] C1. 10 - 02

[54] 手錶

Wristwatch

[73] SWATCH AG (SWATCH SA) (SWATCH LTD.)

Jakob-Stä mpfli-Strasse 94,

CH-2502 Biel/Bienne,

SWITZERLAND

[74] E11a Cheong (Hong Kong) Limited

5001 Hopewell Centre,

183 Queen's Road East,

HONG KONG



- 
- [11] 1600580.7  
[15] 31-03-2016  
[30] 01-10-2015 / BZ, MA, AL, AM, AZ, BA, MK, GE, KG, LI, MC, MN, ME, NO, OM, KR, MD, SG, CH, TN, TR, UA, EM / DM/087 877  
[51] C1. 10 - 02  
[54] 手錶  
Wristwatch  
[73] SWATCH AG (SWATCH SA) (SWATCH LTD.)  
Jakob-Stämpfli-Strasse 94,  
CH-2502 Biel/Bienne,  
SWITZERLAND  
[74] E11a Cheong (Hong Kong) Limited  
5001 Hopewell Centre,  
183 Queen's Road East,  
HONG KONG



- 
- [11] 1600581.9M001  
[15] 31-03-2016  
[30] 02-10-2015 / BZ, MA, AL, AM, AZ, BA, MK, GE, KG, LI, MN, ME, OM, KR, MD, CH, TN, TR, EM / DM/087 839  
[51] C1. 16 - 06  
[54] 眼鏡框  
Eyeglass frame  
[73] SWATCH AG (SWATCH SA) (SWATCH LTD.)  
Jakob-Stämpfli-Strasse 94,  
CH-2502 Biel/Bienne,  
SWITZERLAND  
[74] E11a Cheong (Hong Kong) Limited

5001 Hopewell Centre,  
183 Queen's Road East,  
HONG KONG



---

[11] 1600581.9M002

[15] 31-03-2016

[30] 02-10-2015 / BZ, MA, AL, AM, AZ, BA, MK, GE, KG, LI, MN, ME,  
OM, KR, MD, CH, TN, TR, EM / DM/087 839

[51] C1. 16 - 06

[54] 眼鏡框

Eyeglass frame

[73] SWATCH AG (SWATCH SA) (SWATCH LTD.)

Jakob-Stämpfli-Strasse 94,

CH-2502 Biel/Bienne,

SWITZERLAND

[74] E11a Cheong (Hong Kong) Limited

5001 Hopewell Centre,

183 Queen's Road East,

HONG KONG



---

[11] 1600581.9M003

[15] 31-03-2016

[30] 02-10-2015 / BZ, MA, AL, AM, AZ, BA, MK, GE, KG, LI, MN, ME,  
OM, KR, MD, CH, TN, TR, EM / DM/087 839

[51] C1. 16 - 06

[54] 眼鏡框

Eyeglass frame

[73] SWATCH AG (SWATCH SA) (SWATCH LTD.)

Jakob-Stä mpfli-Strasse 94,

CH-2502 Biel/Bienne,

SWITZERLAND

[74] E11a Cheong (Hong Kong) Limited

5001 Hopewell Centre,

183 Queen's Road East,

HONG KONG



---

[11] 1600581.9M004

[15] 31-03-2016

[30] 02-10-2015 / BZ, MA, AL, AM, AZ, BA, MK, GE, KG, LI, MN, ME,  
OM, KR, MD, CH, TN, TR, EM / DM/087 839

[51] C1. 16 - 06

[54] 眼鏡框

Eyeglass frame

[73] SWATCH AG (SWATCH SA) (SWATCH LTD.)

Jakob-Stä mpfli-Strasse 94,

CH-2502 Biel/Bienne,

SWITZERLAND

[74] E11a Cheong (Hong Kong) Limited

5001 Hopewell Centre,

183 Queen's Road East,

HONG KONG



- [11] 1600581.9M005  
[15] 31-03-2016  
[30] 02-10-2015 / BZ, MA, AL, AM, AZ, BA, MK, GE, KG, LI, MN, ME,  
OM, KR, MD, CH, TN, TR, EM / DM/087 839  
[51] C1. 16 - 06  
[54] 太陽眼鏡  
Sunglasses  
[73] SWATCH AG (SWATCH SA) (SWATCH LTD.)  
Jakob-Stä mpfli-Strasse 94,  
CH-2502 Biel/Bienne,  
SWITZERLAND  
[74] E11a Cheong (Hong Kong) Limited  
5001 Hopewell Centre,  
183 Queen's Road East,  
HONG KONG



- 
- [11] 1600581.9M006  
[15] 31-03-2016  
[30] 02-10-2015 / BZ, MA, AL, AM, AZ, BA, MK, GE, KG, LI, MN, ME,  
OM, KR, MD, CH, TN, TR, EM / DM/087 839  
[51] C1. 16 - 06  
[54] 太陽眼鏡  
Sunglasses  
[73] SWATCH AG (SWATCH SA) (SWATCH LTD.)  
Jakob-Stä mpfli-Strasse 94,  
CH-2502 Biel/Bienne,  
SWITZERLAND  
[74] E11a Cheong (Hong Kong) Limited  
5001 Hopewell Centre,  
183 Queen's Road East,  
HONG KONG



---

[11] 1600581.9M007

[15] 31-03-2016

[30] 02-10-2015 / BZ, MA, AL, AM, AZ, BA, MK, GE, KG, LI, MN, ME,  
OM, KR, MD, CH, TN, TR, EM / DM/087 839

[51] C1. 16 - 06

[54] 太陽眼鏡

Sunglasses

[73] SWATCH AG (SWATCH SA) (SWATCH LTD.)

Jakob-Stä mpfli-Strasse 94,

CH-2502 Biel/Bienne,

SWITZERLAND

[74] E11a Cheong (Hong Kong) Limited

5001 Hopewell Centre,

183 Queen's Road East,

HONG KONG



---

[11] 1600581.9M008

[15] 31-03-2016

[30] 02-10-2015 / BZ, MA, AL, AM, AZ, BA, MK, GE, KG, LI, MN, ME,  
OM, KR, MD, CH, TN, TR, EM / DM/087 839

[51] C1. 16 - 06

[54] 太陽眼鏡

Sunglasses

[73] SWATCH AG (SWATCH SA) (SWATCH LTD.)

Jakob-Stä mpfli-Strasse 94,



CH-2502 Biel/Bienne,  
SWITZERLAND

[74] E11a Cheong (Hong Kong) Limited  
5001 Hopewell Centre,  
183 Queen's Road East,  
HONG KONG



---

[11] 1600581.9M009

[15] 31-03-2016

[30] 02-10-2015 / BZ, MA, AL, AM, AZ, BA, MK, GE, KG, LI, MN, ME,  
OM, KR, MD, CH, TN, TR, EM / DM/087 839

[51] C1. 16 - 06

[54] 太陽眼鏡

Sunglasses

[73] SWATCH AG (SWATCH SA) (SWATCH LTD.)

Jakob-Stämpfli-Strasse 94,

CH-2502 Biel/Bienne,

SWITZERLAND

[74] E11a Cheong (Hong Kong) Limited

5001 Hopewell Centre,

183 Queen's Road East,

HONG KONG



---

[11] 1600581.9M010

[15] 31-03-2016

[30] 02-10-2015 / BZ, MA, AL, AM, AZ, BA, MK, GE, KG, LI, MN, ME, OM, KR, MD, CH, TN, TR, EM / DM/087 839

[51] C1. 16 - 06

[54] 太陽眼鏡

Sunglasses

[73] SWATCH AG (SWATCH SA) (SWATCH LTD.)

Jakob-Stä mpfli-Strasse 94,

CH-2502 Biel/Bienne,

SWITZERLAND

[74] E11a Cheong (Hong Kong) Limited

5001 Hopewell Centre,

183 Queen's Road East,

HONG KONG



---

[11] 1600583.3

[15] 31-03-2016

[30] 05-10-2015 / BZ, MA, AL, AM, AZ, BA, MK, GE, KG, LI, MN, ME, OM, MD, CH, TN, TR, EM / DM/087 884

[51] C1. 10 - 02

[54] 手錶

Wristwatch

[73] SWATCH AG (SWATCH SA) (SWATCH LTD.)

Jakob-Stä mpfli-Strasse 94,

CH-2502 Biel/Bienne,

SWITZERLAND

[74] E11a Cheong (Hong Kong) Limited

5001 Hopewell Centre,

183 Queen's Road East,

HONG KONG



[11] 1600584.5

[15] 31-03-2016

[30] 06-10-2015 / BZ, MA, AL, AM, AZ, BA, MK, GE, KG, LI, MC, MN,  
ME, NO, OM, KR, MD, SG, TN, TR, UA, CH, EM / DM/087 831

[51] C1. 10 - 02

[54] 手錶

Wristwatch

[73] SWATCH AG (SWATCH SA) (SWATCH LTD.)

Jakob-Stämpfli-Strasse 94,

CH-2502 Biel/Bienne,

SWITZERLAND

[74] E11a Cheong (Hong Kong) Limited

5001 Hopewell Centre,

183 Queen's Road East,

HONG KONG



---

[11] 1600586.0

[15] 01-04-2016

[51] C1. 5 - 02

[54] 花邊

Lace

[73] Best Pacific Textile Ltd.

Jingang Road, Xinsha Port Industrial Zone,

Machong Town, Dongguan,

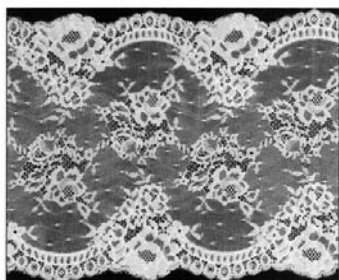
Guangdong, China

[74] George G. Wang

Suite 17A, Tower 7

Fanling Town Center

Fanling, NT, HONG KONG



---

[11] 1600587.2

[15] 01-04-2016

[51] C1. 5 - 02

[54] 花邊

Lace

[73] Best Pacific Textile Ltd.

Jingang Road, Xinsha Port Industrial Zone,

Machong Town, Dongguan,

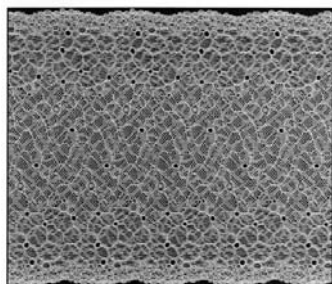
Guangdong, China

[74] George G. Wang

Suite 17A, Tower 7

Fanling Town Center

Fanling, NT, HONG KONG



---

[11] 1600588.4

[15] 01-04-2016

[51] C1. 5 - 02

[54] 花邊

Lace

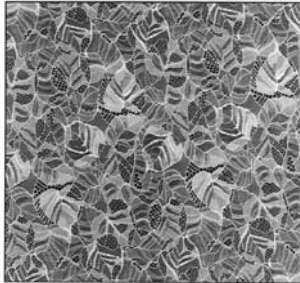
[73] Best Pacific Textile Ltd.

Jingang Road, Xinsha Port Industrial Zone,

Machong Town, Dongguan,

Guangdong, China

- [74] George G. Wang  
Suite 17A, Tower 7  
Fanling Town Center  
Fanling, NT, HONG KONG



---

[11] 1600589.6

[15] 01-04-2016

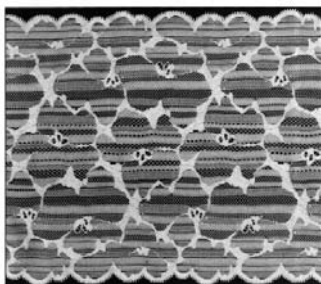
[51] C1. 5 - 02

[54] 花邊

Lace

- [73] Best Pacific Textile Ltd.  
Jingang Road, Xinsha Port Industrial Zone,  
Machong Town, Dongguan,  
Guangdong, China

- [74] George G. Wang  
Suite 17A, Tower 7  
Fanling Town Center  
Fanling, NT, HONG KONG



---

[11] 1600590.8

[15] 01-04-2016

[51] C1. 21 - 01

[54] 玩具氣槍的槍托

Stock of toy air soft gun

[73] APS Limited

Unit B, 22/F, Richwealth Industrial Building,

77-87 Wang Lung Street,

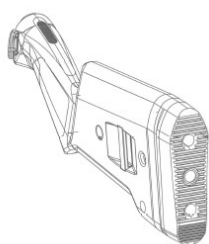
Tsuen Wan, N.T., HONG KONG

[74] HONG KONG INTELLECTUAL PROPERTY AGENT LIMITED

Unit 230, 2/F, Building 12W,

No.12 Science Park West Avenue, Phase 3,

Hong Kong Science Park, Pak Shek Kok, N.T., HONG KONG



---

[11] 1600591.0

[15] 01-04-2016

[51] C1. 21 - 01

[54] 玩具氣槍的槍托

Stock of toy air soft gun

[73] APS Limited

Unit B, 22/F, Richwealth Industrial Building,

77-87 Wang Lung Street,

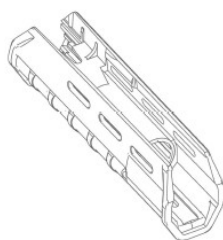
Tsuen Wan, N.T., HONG KONG

[74] HONG KONG INTELLECTUAL PROPERTY AGENT LIMITED

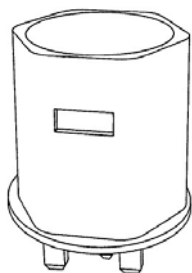
Unit 230, 2/F, Building 12W,

No.12 Science Park West Avenue, Phase 3,

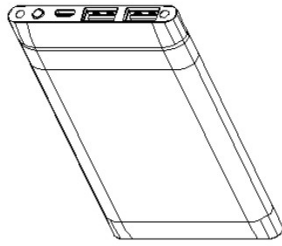
Hong Kong Science Park, Pak Shek Kok, N.T., HONG KONG



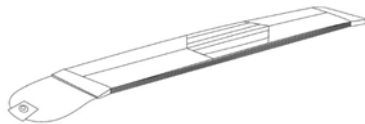
- [11] 1600594.6  
[15] 16-12-2015  
[30] 20-07-2015 / CN / 201530262130.8  
[51] C1. 13 - 02  
[54] 電源適配器  
Power adapter  
[62] 1502652.1 / 16-12-2015  
[73] 深圳市柔宇科技有限公司  
中國內地廣東省深圳市  
南山區科技園科苑路15號  
科興科學園A4-1501  
[74] 景福智慧顧問有限公司  
香港  
銅鑼灣軒尼詩道489號  
銅鑼灣廣場I期22樓2202室



- [11] 1600595.9  
[15] 01-04-2016  
[51] C1. 13 - 02  
[54] 移動電源  
Power bank  
[73] 莊煒權  
CHONG WAI KUEN  
FLAT 906, CHIU SIN HOUSE, UPPER WONG TAI SIN ESTATE, KOWLOON,  
HONG KONG  
[74] HONG KONG INTELLECTUAL PROPERTY AGENT LIMITED  
Unit 230, 2/F, Building 12W,  
No.12 Science Park West Avenue, Phase 3,  
Hong Kong Science Park, Pak Shek Kok, N.T., HONG KONG



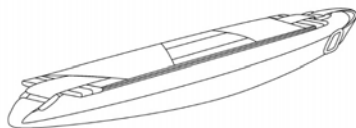
- 
- [11] 1600596.1M001  
[15] 01-04-2016  
[30] 02-10-2015 / JP / 021766 of 2015  
[51] C1. 3 - 01  
[54] 袋  
Bag  
[73] Marna Inc.  
3-15, Higashi-komagata 1-chome,  
Sumida-ku, Tokyo 130-0005,  
JAPAN  
[74] Wilkinson & Grist  
6th Floor, Prince's Building,  
Chater Road,  
HONG KONG



- 
- [11] 1600596.1M002  
[15] 01-04-2016  
[30] 13-01-2016 / JP / 000540 of 2016  
[51] C1. 3 - 01  
[54] 袋  
Bag  
[73] Marna Inc.  
3-15, Higashi-komagata 1-chome,  
Sumida-ku, Tokyo 130-0005,  
JAPAN



- [74] Wilkinson & Grist  
6th Floor, Prince's Building,  
Chater Road,  
HONG KONG



- 
- [11] 1600600.1M001  
[15] 01-04-2016  
[30] 07-10-2015 / JP / 022084 of 2015  
[51] C1. 12 - 16  
[54] 汽車前部分  
Front portion for an automobile  
[73] TOYOTA JIDOSHA KABUSHIKI KAISHA  
1, Toyota-cho,  
Toyota-shi, Aichi-ken,  
471-8571, JAPAN  
[74] CLT Patent & Trademark (H.K.) Ltd.  
Unit 09, 34/F., Office Tower,  
Convention Plaza, No. 1 Harbour Road,  
Wanchai, HONG KONG



- 
- [11] 1600600.1M002  
[15] 01-04-2016  
[30] 07-10-2015 / JP / 022085 of 2015  
[51] C1. 12 - 16  
[54] 汽車後部分  
Rear portion for an automobile  
[73] TOYOTA JIDOSHA KABUSHIKI KAISHA

1, Toyota-cho,  
Toyota-shi, Aichi-ken,  
471-8571, JAPAN

[74] CLT Patent & Trademark (H.K.) Ltd.  
Unit 09, 34/F., Office Tower,  
Convention Plaza, No. 1 Harbour Road,  
Wanchai, HONG KONG



---

[11] 1600601.3  
[15] 01-04-2016  
[30] 07-10-2015 / MA, EM, CH, TR / DM/089 006  
[51] C1. 11 - 01  
[54] 手鐲  
Bracelet  
[73] CARTIER INTERNATIONAL AG  
Hinterbergstrasse 22,  
6312 Steinhausen,  
SWITZERLAND  
[74] WENPING & CO.  
1701 Tung Wai Commercial Building,  
111 Gloucester Road,  
HONG KONG



---

[11] 1600602.5  
[15] 01-04-2016  
[30] 07-10-2015 / MA, EM, CH, TR / DM/089 006  
[51] C1. 11 - 01

[54] 項鍊

Necklace

[73] CARTIER INTERNATIONAL AG

Hinterbergstrasse 22,

6312 Steinhausen,

SWITZERLAND

[74] WENPING & CO.

1701 Tung Wai Commercial Building,

111 Gloucester Road,

HONG KONG



---

[11] 1600603.7

[15] 01-04-2016

[30] 07-10-2015 / MA, EM, CH, TR / DM/089 006

[51] C1. 11 - 01

[54] 項鍊

Necklace

[73] CARTIER INTERNATIONAL AG

Hinterbergstrasse 22,

6312 Steinhausen,

SWITZERLAND

[74] WENPING & CO.

1701 Tung Wai Commercial Building,

111 Gloucester Road,

HONG KONG



- [11] 1600604.9  
[15] 05-04-2016  
[30] 05-10-2015 / US / 29/541,508  
[51] C1. 23 - 04  
[54] 具有夾子的空氣清新器  
Air freshener with clip  
[73] 香味2市場股份有限公司  
SCENT2MARKET INC.  
1 ODELL PLAZA, SUITE 123,  
YONKERS, NEW YORK, 10701,  
UNITED STATES  
[74] CLT Patent & Trademark (H.K.) Ltd.  
Unit 09, 34/F., Office Tower,  
Convention Plaza, No. 1 Harbour Road,  
Wanchai, HONG KONG



- 
- [11] 1600608.8M001  
[15] 05-04-2016  
[51] C1. 9 - 01  
[54] 瓶  
Bottle  
[73] Laboratoires M&L, Soci ẽ t ẽ Anonyme  
Zone Industrielle Saint-Maurice,  
04100 Manosque,  
FRANCE  
[74] Lehman, Lee & Xu Patent and Trademark Agents Limited  
Suite 3313, Tower One,  
Times Square, 1 Matheson Street,  
Causeway Bay, HONG KONG



---

[11] 1600608.8M002

[15] 05-04-2016

[51] C1. 9 - 07

[54] 瓶蓋

Bottle cap

[73] Laboratoires M&L, Soci é t é Anonyme

Zone Industrielle Saint-Maurice,

04100 Manosque,

FRANCE

[74] Lehman, Lee & Xu Patent and Trademark Agents Limited

Suite 3313, Tower One,

Times Square, 1 Matheson Street,

Causeway Bay, HONG KONG



---

[11] 1600612.6

[15] 05-04-2016

[30] 06-10-2015 / KR / 30-2015-0050230

[51] C1. 12 - 07

[54] 飛機

Airplane

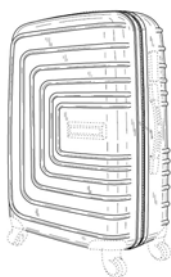
[73] ASIANA AIRLINES, INC.

443-83, Ojeong-ro,  
Gangseo-gu, Seoul,  
KOREA, REPUBLIC OF

- [74] NTD Patent & Trade Mark Agency Ltd.  
Units 1805-6, 18/F., Greenfield Tower,  
Concordia Plaza, No.1 Science Museum Road,  
Tsimshatsui East, Kowloon, HONG KONG



- 
- [11] 1600615.3  
[15] 05-04-2016  
[30] 13-10-2015 / EM / 002821082-0006  
[51] C1. 3 - 01  
[54] 行李箱  
Luggage  
[73] Samsonite IP Holdings S.à r.l.  
13-15 avenue de la Libert é ,  
L-1931 Luxembourg,  
LUXEMBOURG  
[74] Wilkinson & Grist  
6th Floor, Prince's Building,  
Chater Road,  
HONG KONG



- 
- [11] 1600620.3  
[15] 06-04-2016  
[30] 08-10-2015 / EM / 002814350

[51] C1. 28 - 03

[54] 雙頭乾剃鬚器

2-Head dry shaver

[73] Koninklijke Philips N.V.

High Tech Campus 5,

5656 AE, Eindhoven,

NETHERLANDS

[74] Wilkinson & Grist

6th Floor, Prince's Building,

Chater Road,

HONG KONG



---

[11] 1600621.5M001

[15] 06-04-2016

[51] C1. 26 - 02

[54] 提燈

Lantern

[73] Flying Dragon Development Limited

Unit B, 6/F., Unison Industrial Building,

27-31 Au Pui Wan Street, Fotan,

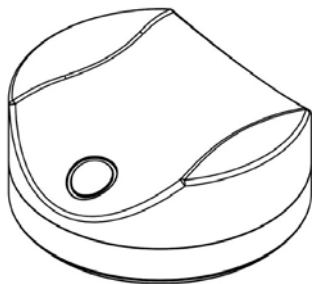
Shatin, HONG KONG

[74] BENNY KONG & TSAI

Unit 19B, Overseas Trust Bank Building,

No. 160 Gloucester Road,

Wanchai, HONG KONG



[11] 1600621.5M002

[15] 06-04-2016

[51] C1. 26 - 02

[54] 提燈

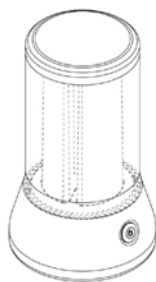
Lantern

[73] Flying Dragon Development Limited

Unit B, 6/F., Unison Industrial Building,  
27-31 Au Pui Wan Street, Fotan,  
Shatin, HONG KONG

[74] BENNY KONG & TSAI

Unit 19B, Overseas Trust Bank Building,  
No. 160 Gloucester Road, Wanchai,  
HONG KONG



---

[11] 1600623.9

[15] 06-04-2016

[30] 16-12-2015 / KR / 30-2015-0064464

[51] C1. 28 - 03

[54] 紋身器具用針筒

Needle cartridge for a tattooing apparatus

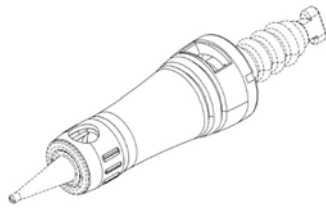
[73] Jong dae LEE

4F, Do-A11 Bldg., 34, Hyoryeong-ro 49-gil,  
Seocho-ku, Seoul,  
KOREA, REPUBLIC OF

[74] BENNY KONG & TSAI

Unit 19B, Overseas Trust Bank Building,  
No. 160 Gloucester Road,  
Wanchai, HONG KONG





---

[11] 1600624.1

[15] 06-04-2016

[30] 21-12-2015 / CH, EM, IS, JP, KR, LI, MC, OM, SG, TR, UA /  
DM/088 762

[51] C1. 10 - 02

[54] 手錶

Wristwatch

[73] Turlen Holding SA

rue du Jura 11,

2345 Les Breuleux,

SWITZERLAND

[74] Wilkinson & Grist

6th Floor, Prince's Building,

Chater Road,

HONG KONG



---

[11] 1600625.4

[15] 06-04-2016

[30] 18-11-2015 / EM / 002865006-0001

[51] C1. 12 - 08

[54] 汽車

Motor vehicle

[73] AUDI AG

D-85045 Ingolstadt, GERMANY

[74] MARKS & CLERK

Level 9, Cyberport 1,  
100 Cyberport Road,  
Pok Fu Lam, HONG KONG



---

[11] 1600626.6

[15] 06-04-2016

[30] 18-11-2015 / EM / 002865006-0001

[51] C1. 21 - 01

[54] 用作陳列模型或玩樂玩具的模型汽車

Model vehicle for use as either a model for display or a toy  
for playing

[73] AUDI AG

D-85045 Ingolstadt, GERMANY

[74] MARKS & CLERK

Level 9, Cyberport 1,  
100 Cyberport Road,  
Pok Fu Lam, HONG KONG



---

[11] 1600641.7M001

[15] 08-04-2016

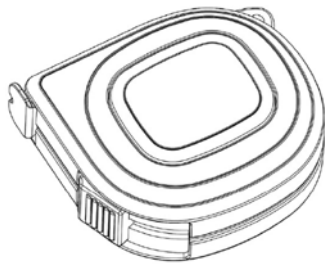
[51] C1. 10 - 04

[54] 卷尺

Tape

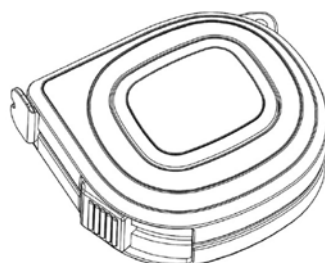
[73] 杰美泰科技（深圳）有限公司

中國內地廣東省  
深圳市南山區創業路  
中興工業城4棟3樓302房  
[74] 海思國際知識產權有限公司  
香港九龍  
旺角道33號  
凱途發展大廈7樓04室



---

[11] 1600641.7M002  
[15] 08-04-2016  
[51] C1. 10 - 04  
[54] 卷尺  
Tape  
[73] 杰美泰科技（深圳）有限公司  
中國內地廣東省  
深圳市南山區創業路  
中興工業城4棟3樓302房  
[74] 海思國際知識產權有限公司  
香港九龍  
旺角道33號  
凱途發展大廈7樓04室





香港特別行政區政府知識產權署外觀設計註冊處  
The Government of the Hong Kong Special Administrative Region  
Designs Registry, Intellectual Property Department

根據註冊外觀設計條例第28條，下列註冊外觀設計因未繳續期費而停止有效。  
各組記項按註冊外觀設計停止有效日期及註冊編號先後次序排列。

Registered designs ceased through non-payment of renewal fees under section 28 of the Registered Designs Ordinance. Entries are listed below under their expiry dates.

**21-07-2016 – 27-07-2016**

21-07-2016	1101266.7M001
1101244.0	1101266.7M002
1101245.3	1101266.7M003
1101247.7	1101266.7M004
1101242.6	1101262.8M004
1101243.8M002	1101262.8M003
1101243.8M001	1101262.8M002
1101248.9	1101262.8M001
1101250.3	

**25-07-2016**

23-07-2016	0601952.5
0000442.6	0601951.3
0001091.2	0601960.2
0100038.1	1101268.1
0601920.8	1101277.0
0601935.0	
0601936.2	

**26-07-2016**

	0111078.8
24-07-2016	1101280.6
0601943.6	1101281.8M001
0601937.4	1101281.8M002
0601942.4	1101278.2M001
0601946.3	1101278.2M002
0601945.1	1101278.2M003
0601947.5	1101279.4
1101257.8	

**27-07-2016**

1101258.0	
1101267.9	0601983.0M001
1101256.6	0601983.0M002
1101259.2	0601992.9
1101265.5M001	1101282.0
1101265.5M002	



香港特別行政區政府知識產權署外觀設計註冊處  
The Government of the Hong Kong Special Administrative Region  
Designs Registry, Intellectual Property Department

根據註冊外觀設計規則第31條刪除的註冊外觀設計。各組記項按註冊外觀設計刪除日期及註冊編號先後次序排列。

Registered designs removed under section 31 of the Registered Designs Rules. Entries are listed below under their removal dates.

01-08-2016 – 04-08-2016

01-08-2016	0600223.8M001
0110113.2	1100132.2
0600176.8	
0600173.1M003	<b>03-08-2016</b>
0600169.3M003	0600263.2M002
0600169.3M002	1100146.2
0600169.3M001	1100142.3
<b>02-08-2016</b>	<b>04-08-2016</b>
0600222.6M003	1100151.2
0600222.6M002	1100152.4
0600215.2	1100149.8
0600220.2	1100154.8
0600211.3	1100157.5M001
0600213.7	1100157.5M003
0600223.8M002	1100157.5M004
0600223.8M003	1100157.5M005
0600223.8M004	1100153.6M006
1100133.4	1100157.5M002
1100140.9	1100148.6
1100141.1	1100161.3M001
1100130.8	1100161.3M005
1100129.6M002	1100161.3M002
1100129.6M001	1100161.3M003
1100139.7	1100147.4
1100128.4	1100156.3M001
1100137.3	1100156.3M002
0600222.6M001	1100156.3M003